

exportise

SUMMER SCHOOLS

Recruitment Guidance

MUSIC TEACHER



**JOIN
TEAM
ORANGE**

TEAM ORANGE

For 35+ years, we've been pioneers in our field, not defined by size but by excellence. Our philosophy goes beyond traditional Vision and Values; we immerse ourselves in the unique "**Team Orange experience**," the heart of our summer school magic.

Our **mission** is crystal clear—to provide an unforgettable learning experience. **We're a family that cares passionately, supports, challenges, and grows together.** At our core lies sports, the Orange Magic that molds our summer school, imparting life skills alongside the English language.

Our motto is: "**Tell me and I forget. Teach me and I remember. Involve me and I learn.**"

Our **aim** is to ensure that all students leave us with **improved language proficiency and confidence, motivation to participate in their Specialist Academy, with friendships and memories that will last a lifetime.** As well as providing English tuition, we help our students to discover their **True Me.** This enables them to gain the learning skills, insight and self-motivation that will help them get ready for their future, adult life.

Team Orange Members are carefully selected for their passion, enthusiasm, and dedication. We are immensely proud that a **large majority of our team returns year after year, while new additions are often former students or friends & family** of existing members. Together, they contribute to the vibrant atmosphere. Being on Team Orange is a responsibility we all take very seriously, as **we collectively uphold the standards** that make us fiercely proud of the way we operate and of the powerful summer school experience and memories we create for - and with - our students.



**JOIN
TEAM
ORANGE**

2024 KEY INFORMATION: MUSIC TEACHER

KEY JOB PURPOSE

To provide an inclusive and engaging music education experience, by fostering a love for music, developing students' musical skills and creating a positive learning environment.

REPORTING TO

Centre Manager

SALARY

from £500 per week
(including holiday pay)

LOCATIONS

- Seaford College

WORKING HOURS

Typically 8:45- 17:45 per day
Monday-Friday plus Performance
on Friday evening

TIME OFF

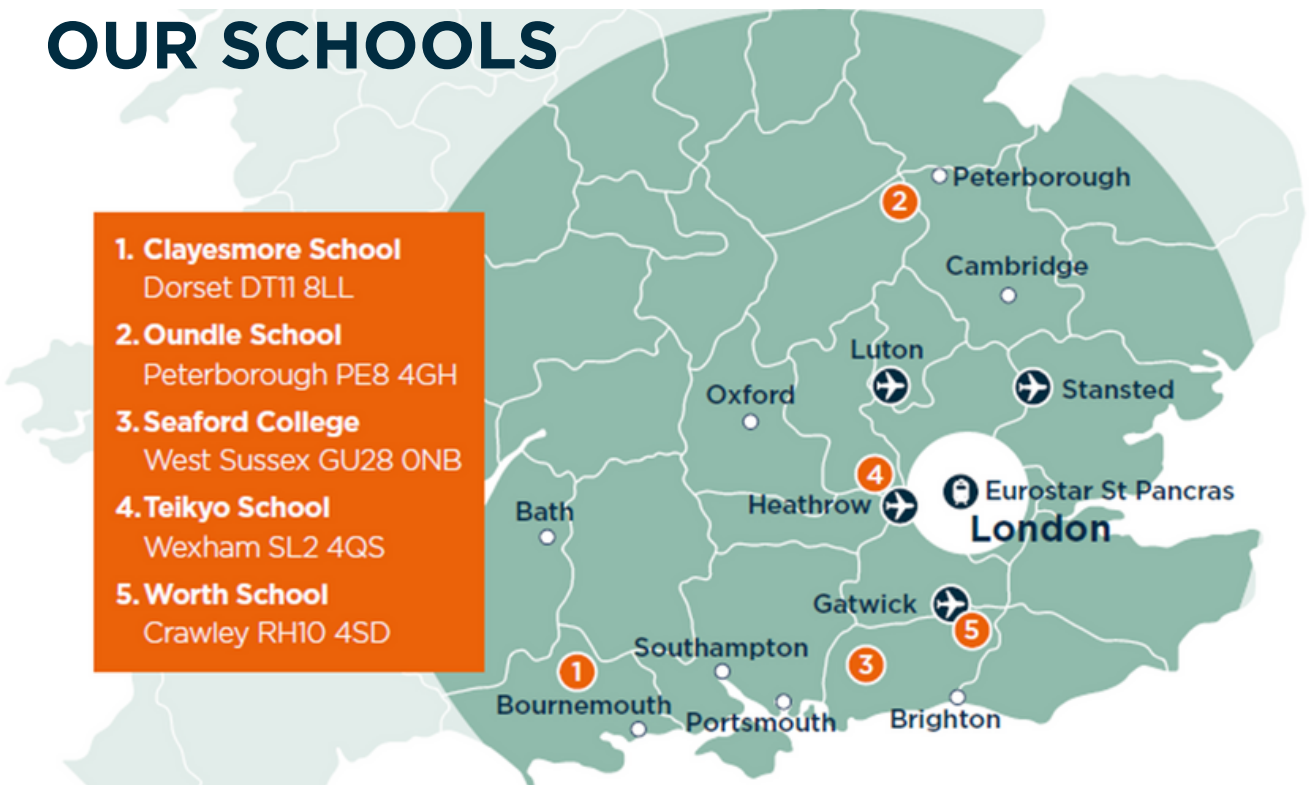
Weekends

SAFEGUARDING

Exsportise is committed to safeguarding and promoting the welfare of children and young people and expects all staff to share this commitment, whether on or off duty. All staff are subject to a Disclosure and Barring Service (DBS) check.

OUR SCHOOLS

- 1. Clayesmore School**
Dorset DT11 8LL
- 2. Oundle School**
Peterborough PE8 4GH
- 3. Seaford College**
West Sussex GU28 0NB
- 4. Teikyo School**
Wexham SL2 4QS
- 5. Worth School**
Crawley RH10 4SD



OVERVIEW

A Music Teacher will develop and implement a comprehensive and engaging music education experience that ensures students' safety, well-being and enjoyment during the music sessions. A Music Teacher will provide a variety of sessions tailored to meet the student's needs and goals, foster a love for music, develop students' musical skills, and promote cultural understanding through diverse musical experiences. The Music Teacher plays a central role in creating a positive and inclusive learning environment that encourages students' creativity, teamwork, and individual expression.

Our top priority is the safety of children and maintaining the highest standards. We require staff members to exhibit high personal standards and to be friendly, positive, and approachable while maintaining a professional and calm demeanour. Staff should be adept at handling sensitive situations, adhering to confidentiality and data protection guidelines, serving as good role models, maintaining professional boundaries and contributing to a positive summer school environment.

ACCOUNTABILITIES

- To understand the expectations of the Exsportise music programme and to ensure that all teaching, processes and paperwork meet Company standards at all times.
- To prepare for each session and to maintain session plans. The Centre Manager may ask for session plans at any time.
- To implement the teaching plan as agreed. Session content is not pre-set by the Company in order to suit staff experience and knowledge. Sessions should be progressive and tailored to meet the learning needs and goals of the students.
- To create a positive and inclusive learning environment that encourages students' creativity, teamwork, and individual expression.
- To teach students in groups with individual attention. Music sessions may be in the mornings and afternoons or one session only.
- To take responsibility for all students' safety, welfare, and behaviour, including discipline, during the activity programme time.
- To ensure that sessions are delivered with appropriate speed and in clear and concise English in order for students to continue learning English outside of the classroom. Guidance can be obtained from the Director of Studies and EFL teachers.

- To lead and provide the necessary guidance and support to any Music Course Assistants while ensuring they are teaching at a high level.
- To produce an end-of-week performance to showcase the students' hard work and teamwork
- To produce an end-of-week recording of the student pieces of music and make it available to them to take home.
- To continuously review appropriate risk assessments and ensure sessions are carried out with the safety of students and staff in mind
- To ensure that all equipment is kept in good condition and stored safely after each session. An end-of-summer inventory is required.
- To ensure any instrument hire requests have been dealt with in advance of the relevant student starting their course.
- To deal with any queries or problems that students, parents or agents may have about the music sessions in a calm and efficient manner.
- To ensure written reports are being produced for each student at the end of each week and to carry out an end-of-week presentation of award

ADDITIONAL DUTIES

- To assist with pastoral care and looking after students' wellbeing and happiness throughout their stay at camp.
- To attend daily staff meetings
- To follow guideline as outlined in the Staff Handbook and as explained by the Centre Manager.
- To help set up / pack up camp as required
- To carry out any other reasonable duties

PERSONAL SPECIFICATIONS

REQUIRED

- Proficiency in playing and teaching a wide variety of music (instrumental and vocal)
- Familiarity with a broad range of musical genres and styles
- Ability to provide constructive feedback and communicate musical concepts in an accessible manner.
- Experience in working with children, ideally international students
- A genuine passion for working with children, creating a positive and nurturing environment
- Ability to inspire and motivate students to explore and appreciate music
- Responsible and hard working with strong team working skills
- Able to motivate children and young adults of all ability levels
- Strong leadership skills and ability to set high standards
- Enthusiastic and friendly and willingness to get involved in all aspects of camp
- Sound communication skills with people at all levels
- Flexible and adaptable approach to working hours

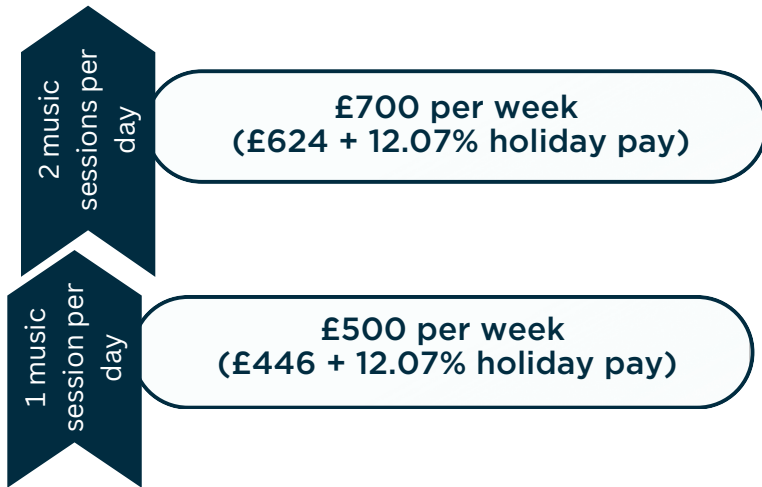
DESIRED

- Degree in Music Performance / Education or similar
- Experience in organising and conducting group activities, performances, recitals etc.
- Experience in music recording and editing is strongly desired

WORKING CONDITIONS

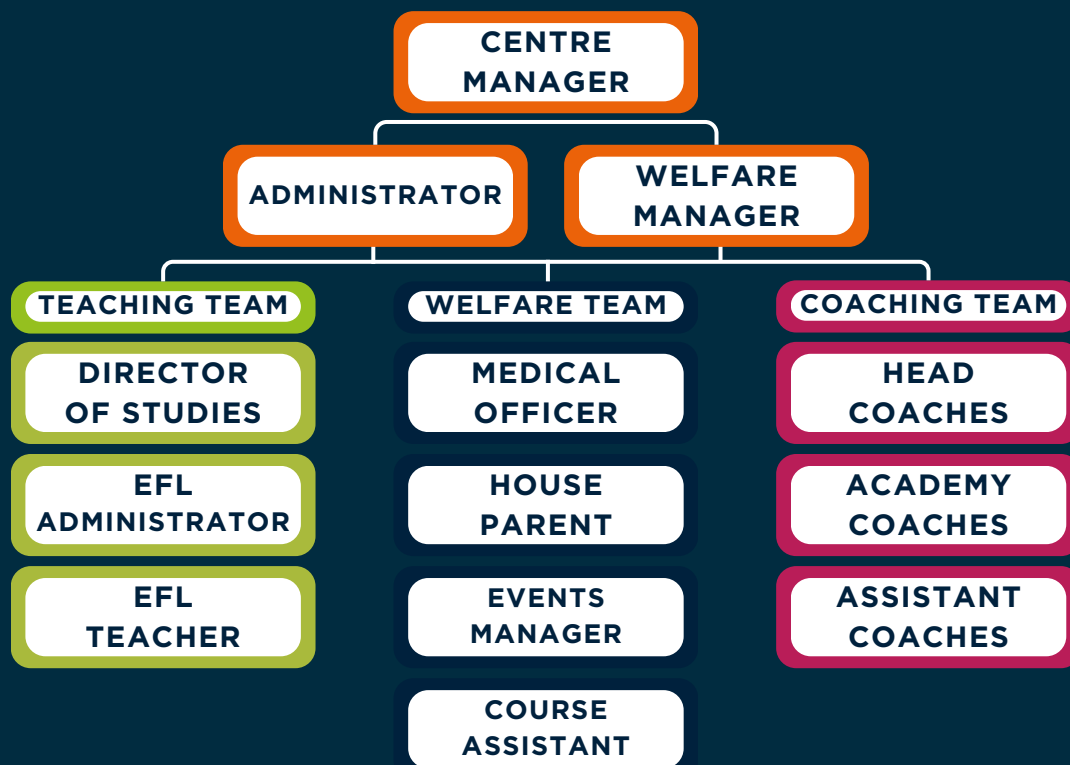
- Your position is Monday-Friday only
- You will be provided on-site accommodation, usually in single rooms with shared bathroom facilities
- 3 buffet style meals are provided by the schools' catering departments, and, by prior arrangement, most special dietary requirements can be catered for

EARN, LEARN, GROW



- Full board accommodation is provided (worth £69.93 per week)
- Two-day in-person induction, paid pro rata
- Grow in a personal and professional capacity
- Work in an international environment
- Help make Exsportise an unforgettable and enriching experience for our students

CAMP STRUCTURE



SAMPLE WEEK

The weekly rota and days off are scheduled by the Centre Manager and, based on the camp requirements, may change on a weekly basis. Any days off requests must be approved by Head Office / Centre Manager.

The example below highlights what a Music Teacher's daily routine may look like. Please note this is a sample only and may vary based on the requirements of the actual camp.

MONDAY - FRIDAY



OUR POLICY ON ALCOHOL, SMOKING AND SUBSTANCE ABUSE

Given your role with children, the possession and consumption of alcohol and substance abuse is strictly prohibited on site or during working hours. Smoking, including the use of electronic nicotine delivery systems (ENDS) such as e-cigarettes, vapes etc. is only permitted in designated smoking areas and when off duty. Staff members are required to be in a condition that allows them to effectively supervise students at all times. Failure to adhere to these rules will be regarded as gross misconduct and may result in immediate dismissal.

**For more information or to apply visit:
www.exsportise.co.uk/summer-jobs**



Accredited by the
 **BRITISH
COUNCIL**
for the teaching
of English in the UK



el.gazette
Centre of Excellence
2023-2024

+44 (0) 144 444777
Recruitment@Exsportise.co.uk
www.exsportise.co.uk

   /exsportise

**JOIN
TEAM
ORANGE**

